



TAI-SAW TECHNOLOGY CO., LTD.

No. 3, Industrial 2nd Rd., Ping-Chen Industrial District,
Taoyuan, 324, Taiwan, R.O.C.

TEL: 886-3-4690038 FAX: 886-3-4697532

E-mail: tstsales@mail.taisaw.com Web: www.taisaw.com


Product Specifications Approval Sheet

Product Description: SAW Filter 1210 MHz SMD 3.0X3.0 mm

TST Part No.: TA1076A

Customer Part No.: _____

Customer signature required
Company: _____
Division: _____
Approved by : _____
Date: _____

Checked by: _____ Bob Chau 

Approved by: _____ Francis Chen 

Date: _____ 10, 20, 2009

1. Customer signed back is required before TST can proceed with sample build and receive orders.
2. Orders received without customer signed back will be regarded as agreement on the specifications.
3. Any specifications changes must be approved upon by both parties and a new revision of specifications shall be released to reflect the changes.



TAI-SAW TECHNOLOGY CO., LTD.

No. 3, Industrial 2nd Rd., Ping-Chen Industrial District,
Taoyuan, 324, Taiwan, R.O.C.

TEL: 886-3-4690038 FAX: 886-3-4697532

E-mail: tstsales@mail.taisaw.com Web: www.taisaw.com

SAW Filter 1210 MHz

MODEL NO.:TA1076A

REV. NO.:1

A. MAXIMUM RATING:

1. Input Power Level: 10 dBm
2. DC Voltage : 3V
3. Operating Temperature: -40°C to +85°C
4. Storage Temperature: -50°C to +95°C

RoHS Compliant
Lead free
Lead-free soldering

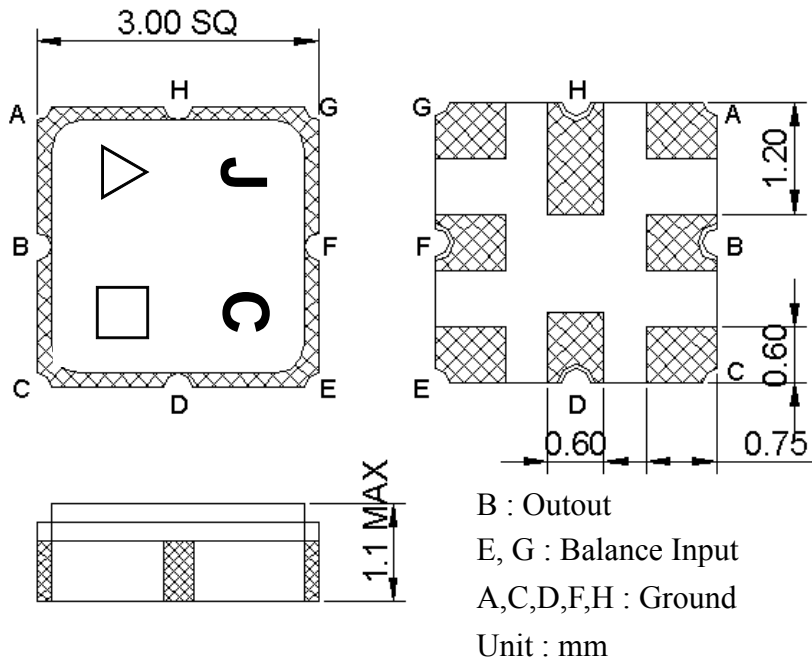
B. ELECTRICAL CHARACTERISTICS:

Terminating source impedance (balanced) : $Z_s = 200 \Omega // 39nH$

Terminating load impedance (single ended) : $Z_L = 50 \Omega$

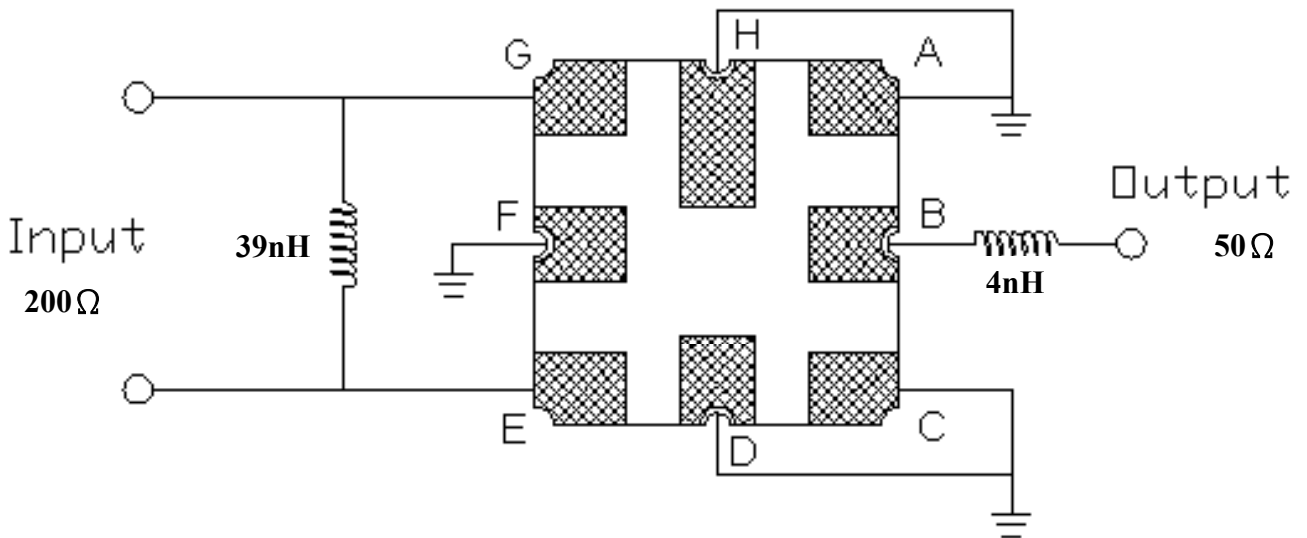
Item	Unit	Min.	Typ.	Max.	Note
Center Frequency F_c	MHz	-	1210	-	-
Bandwidth at -2 dB	MHz	60	93	-	-
Insertion Loss in 1180~1240 MHz	dB	-	4.8	6	-
Amplitude ripple (1180 ~ 1240 MHz)	dB	-	0.8	2	-
I/O VSWR (1180 ~ 1240 MHz)		-	1.5	2.5	-
Attenuation (reference level from 0 dB)					
50 ~ 1100 MHz	dB	42	50	-	-
1325 ~ 2500 MHz	dB	40	44	-	-
2500 ~ 3000 MHz	dB	30	39	-	-
3000 ~ 6000 MHz	dB	22	28	-	-

C.OUTLINE DRAWING:

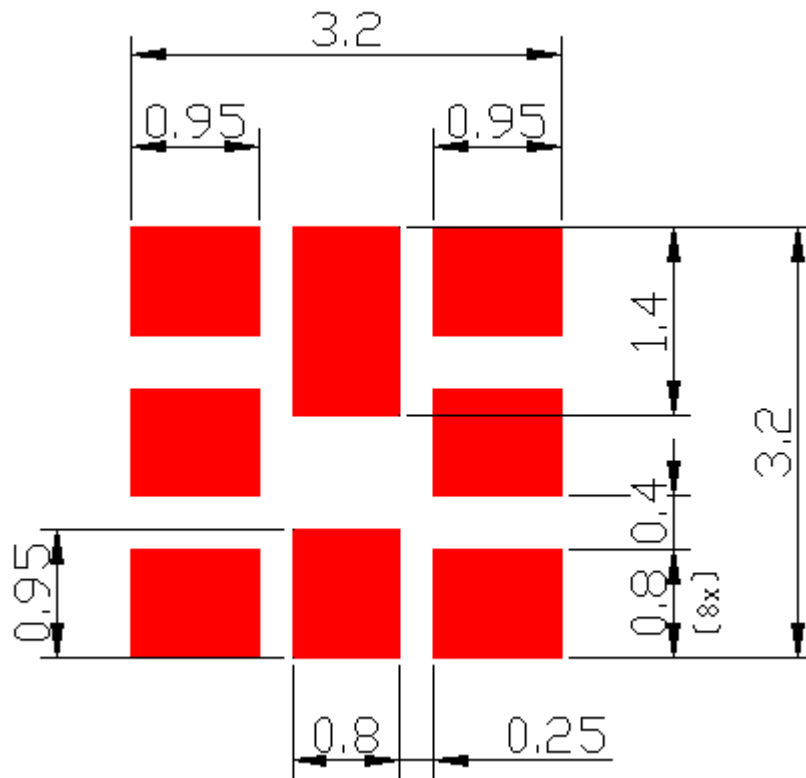


- △ : Year Code (2006->6, ..., 2009->9)
- : Date Code (W01->A,...W26->Z,...W52->z)

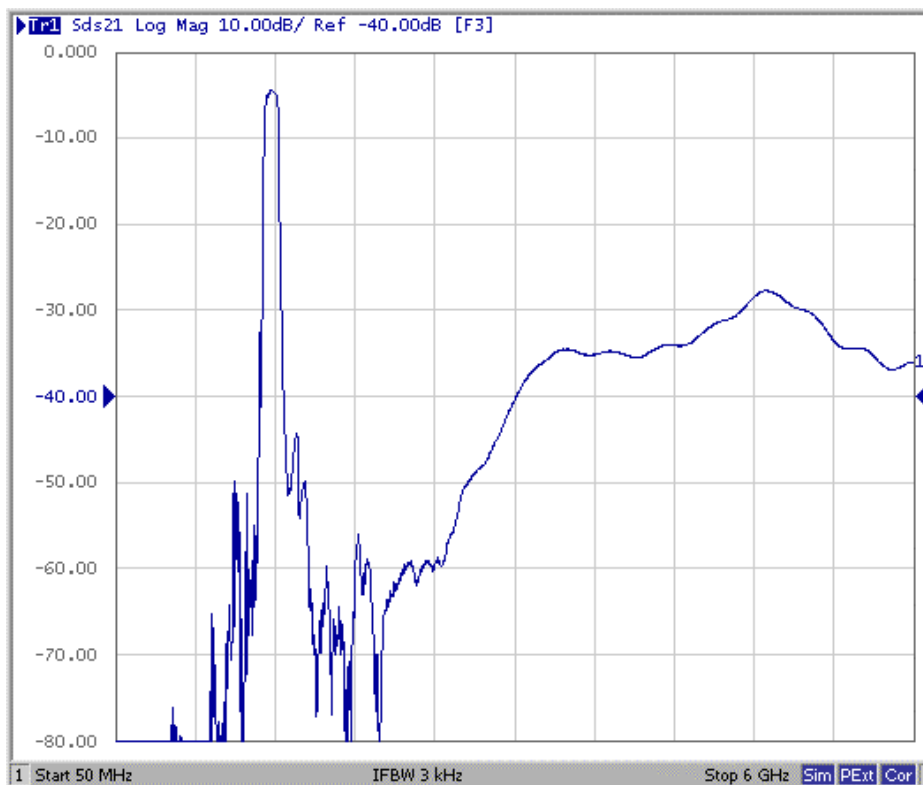
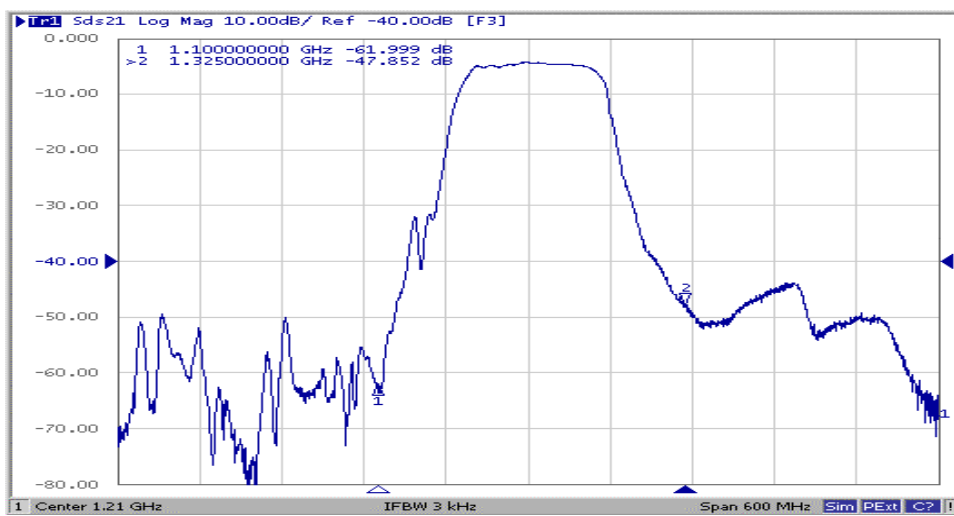
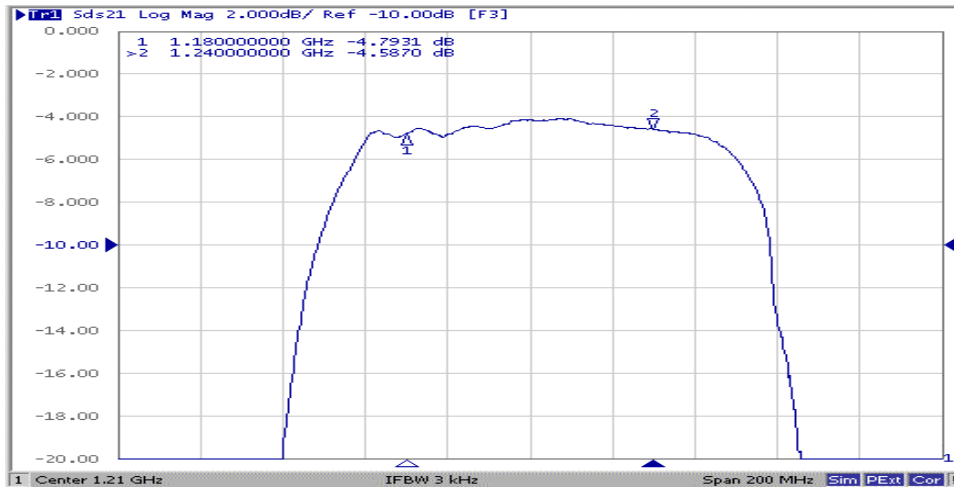
D. MEASUREMENT CIRCUIT:



E. PCB Footprint:



F. Frequency Characteristics :

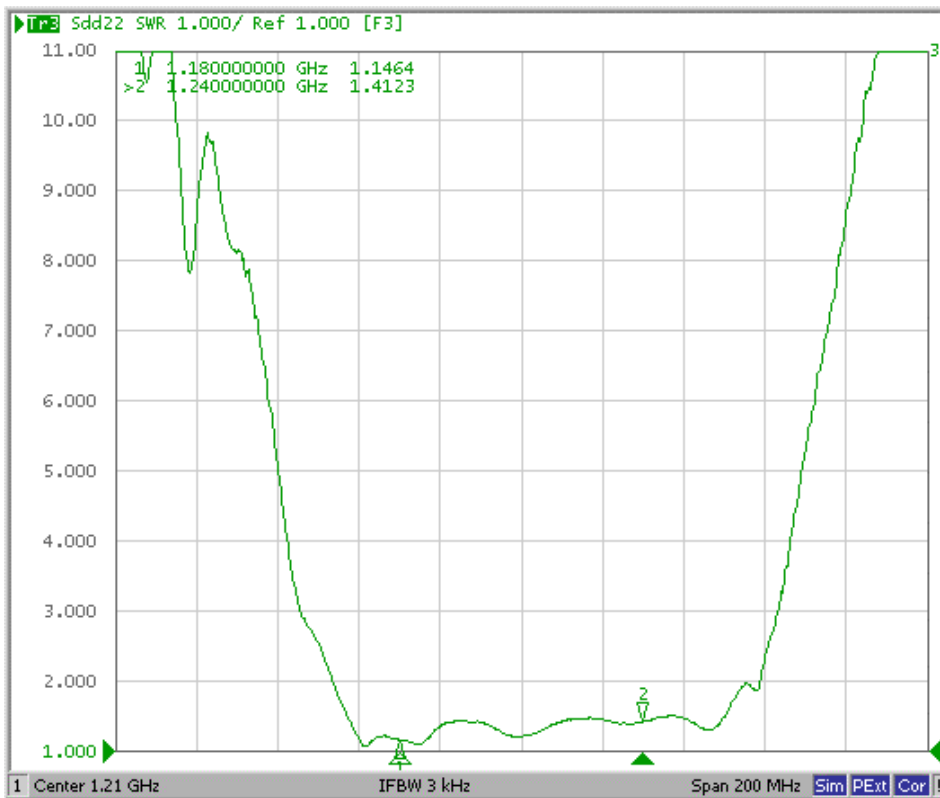


Reflection Functions :

S11



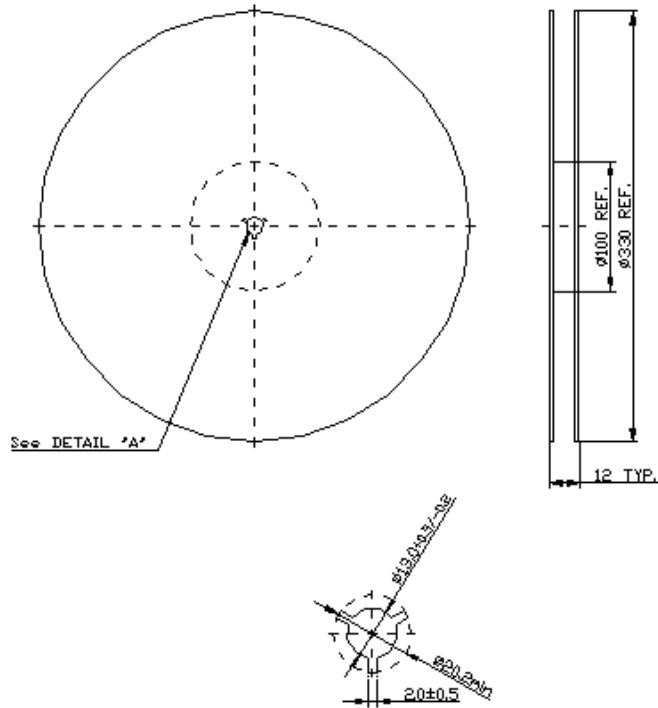
S22



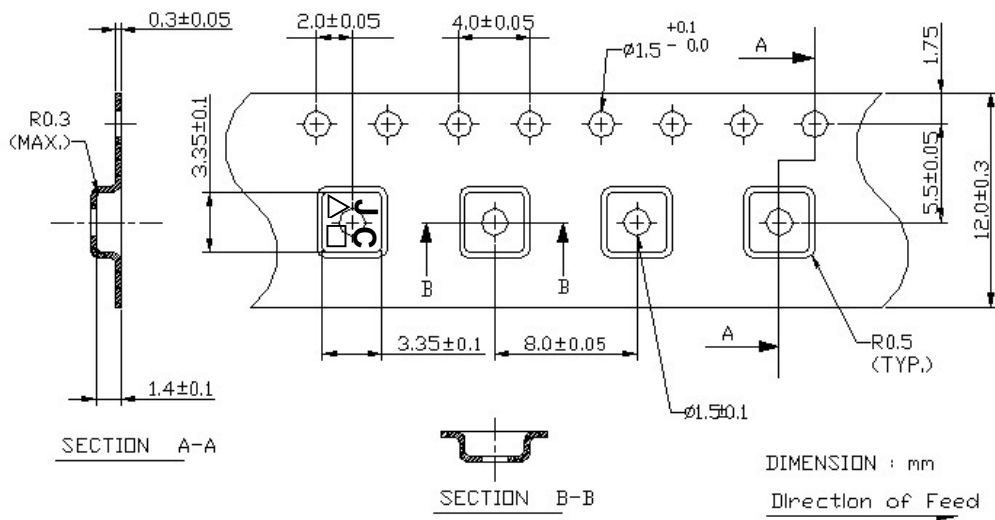
G. PACKING:

1. REEL DIMENSION

(Reel Count : 7"=1000 ; 13"=3000)



2. TAPE DIMENSION



H. RECOMMENDED REFLOW PROFILE :

